

**Request for information under the Freedom of Information Act – 2022.092
Released – 7 July 2022**

Thank you for your email received 5 July 2022 requesting information regarding organisational charts.

Please find detailed below a summary of your request, together with our response.

Summary of your original request:

Please can you reply with an organisational chart including the names, job titles and contact details (email or direct line) of all the divisional clinical managers/directors, deputies and general managers within the organisation.

Please see attached organisational charts for the Trust's Clinical Directors.

It is Trust policy to not release names and contact details of staff below Executive Director Level as this constitutes personal information which is exempt under Section 40(2) in conjunction with Section 40(3A)(a) of the Freedom of Information Act 2000 which relates to 'Personal Information'.

An excerpt of the relevant Freedom of Information legislation can be found below:

Section 40 – Personal information

(2) Any information to which a request for information relates is also exempt information if—

- (a) it constitutes personal data which does not fall within subsection (1), and*
- (b) either the first, second or third condition below is satisfied.*

(3a) The first condition is that the disclosure of the information to a member of the public otherwise than under this Act

- (a) would contravene any of the data protection principles, or*
- (b) would do so if the exemptions in section 24(1) of the Data Protection Act 2018 (manual unstructured data held by public authorities) were disregarded.*

The Executive Directors detailed on these organisational charts can be contacted using the telephone number on this letterhead.

Chair John Goulston Chief Executive Mairead McCormick

Trust HQ The Oast, Unit D, Hermitage Court, Hermitage Lane, Barming, near Maidstone, Kent ME16 9NT

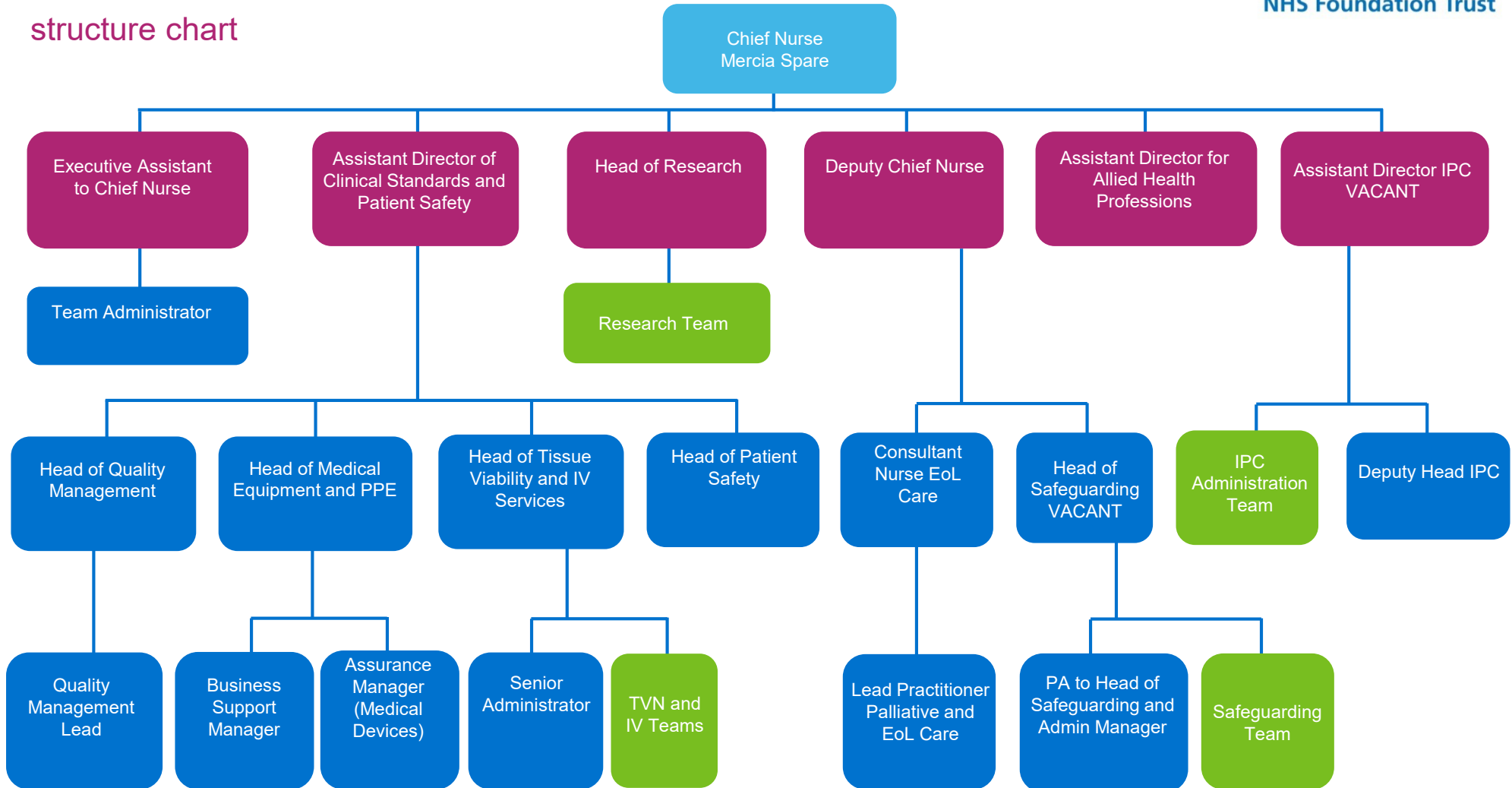


Kent Community Health
NHS Foundation Trust

Clinical, Care and Quality structure and service charts

Clinical, Care and Quality

structure chart



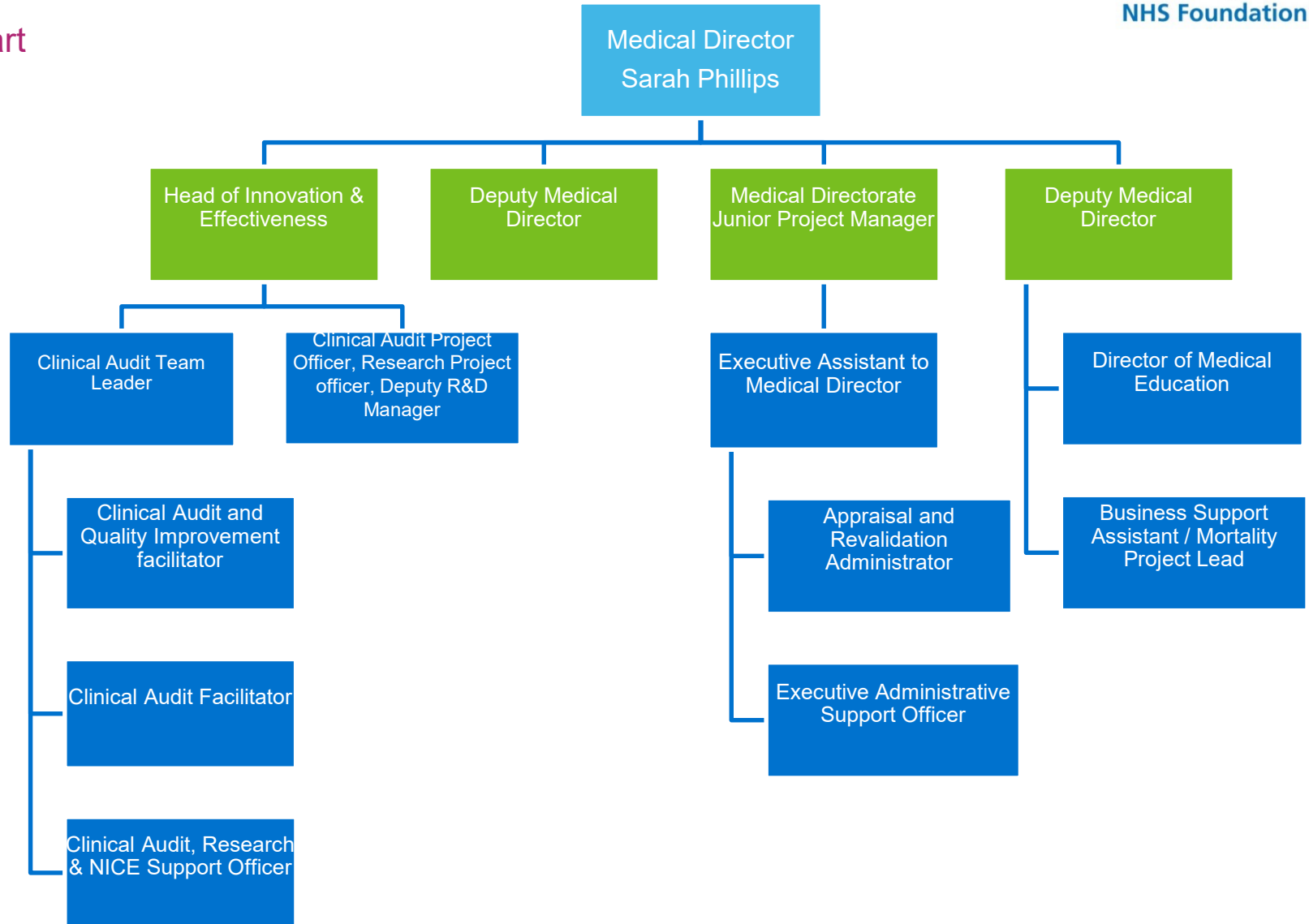


Kent Community Health
NHS Foundation Trust

Medical Directorate structure and service charts

Medical Directorate

structure chart



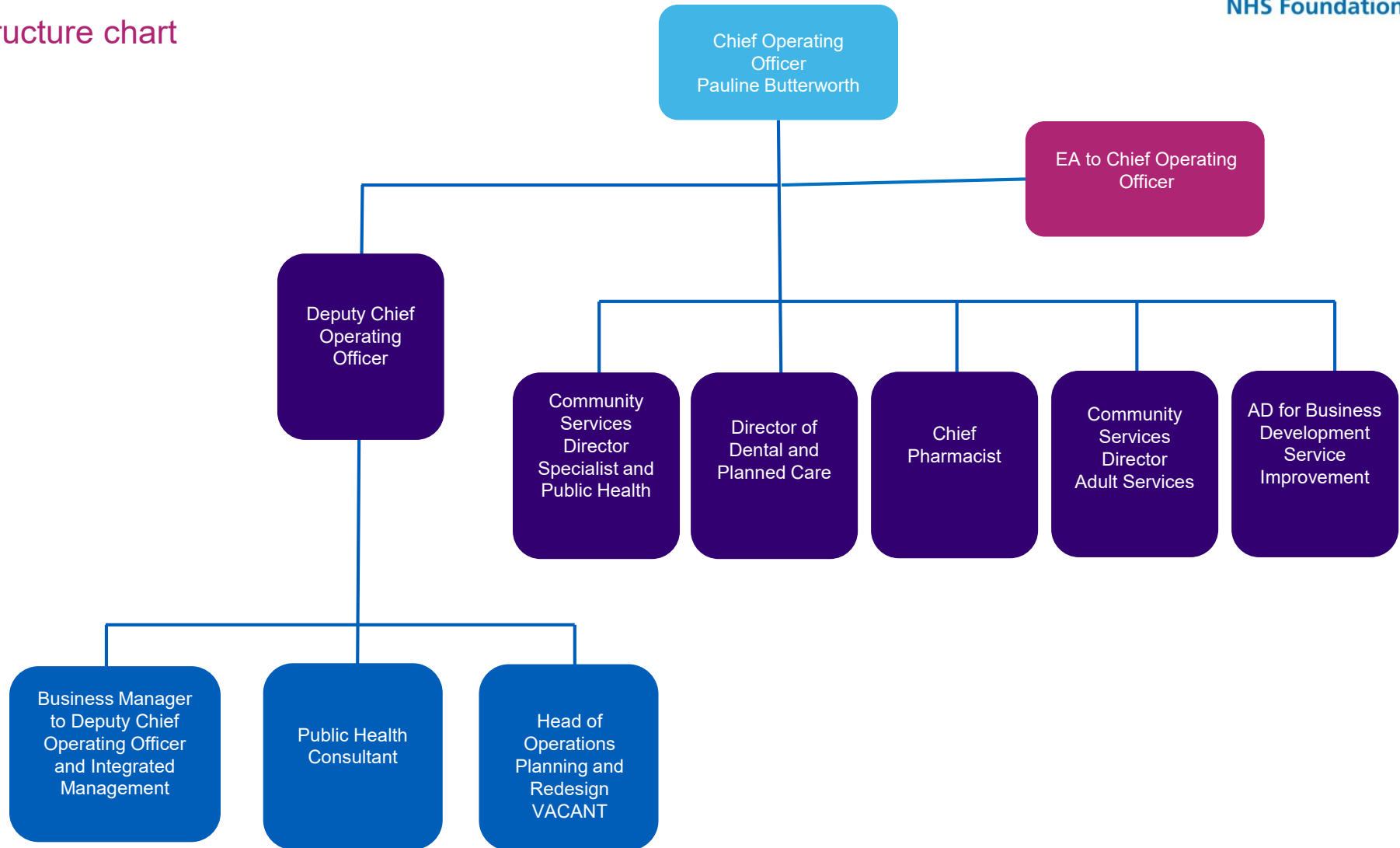


Kent Community Health
NHS Foundation Trust

Operations

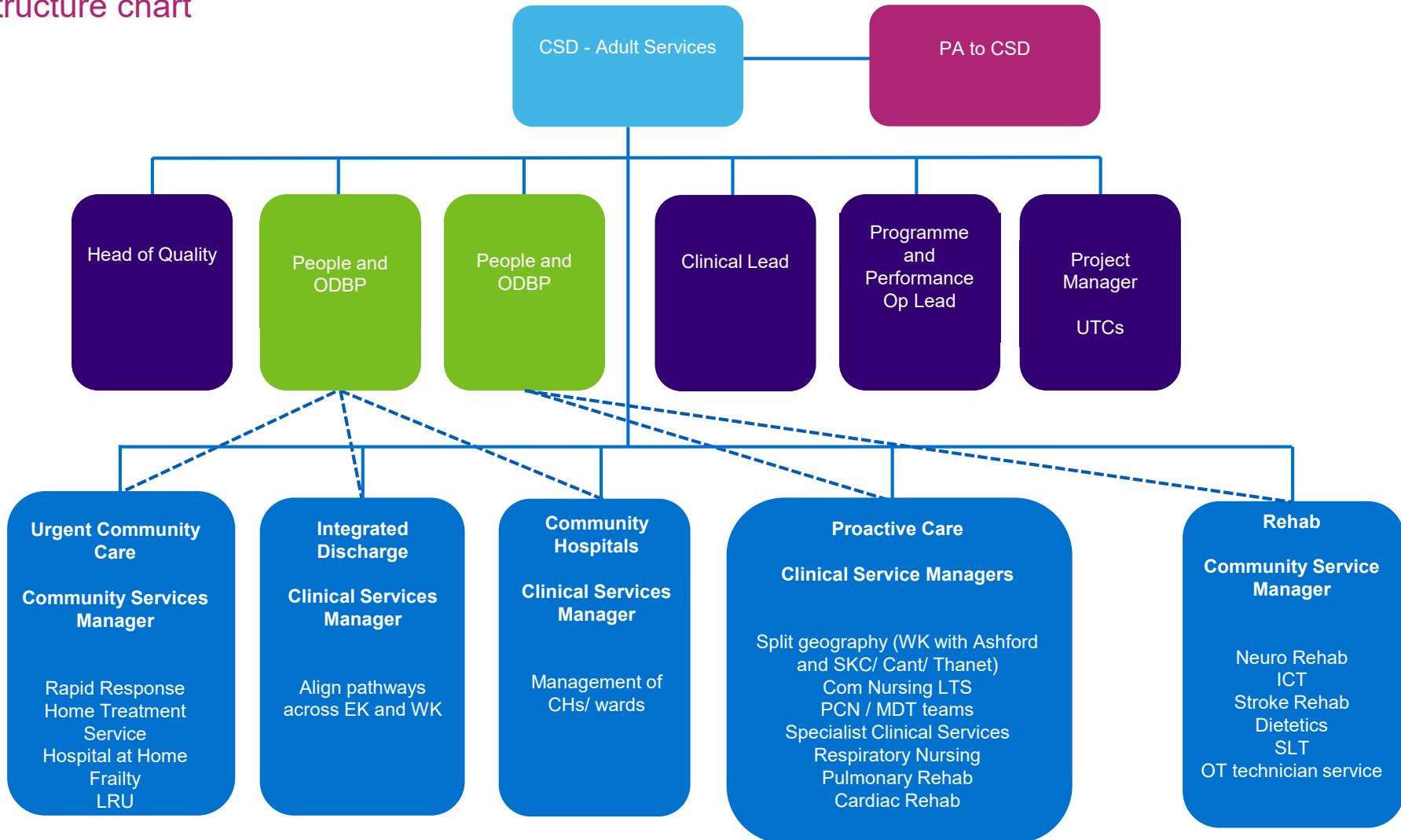
structure and service charts

Operations structure chart



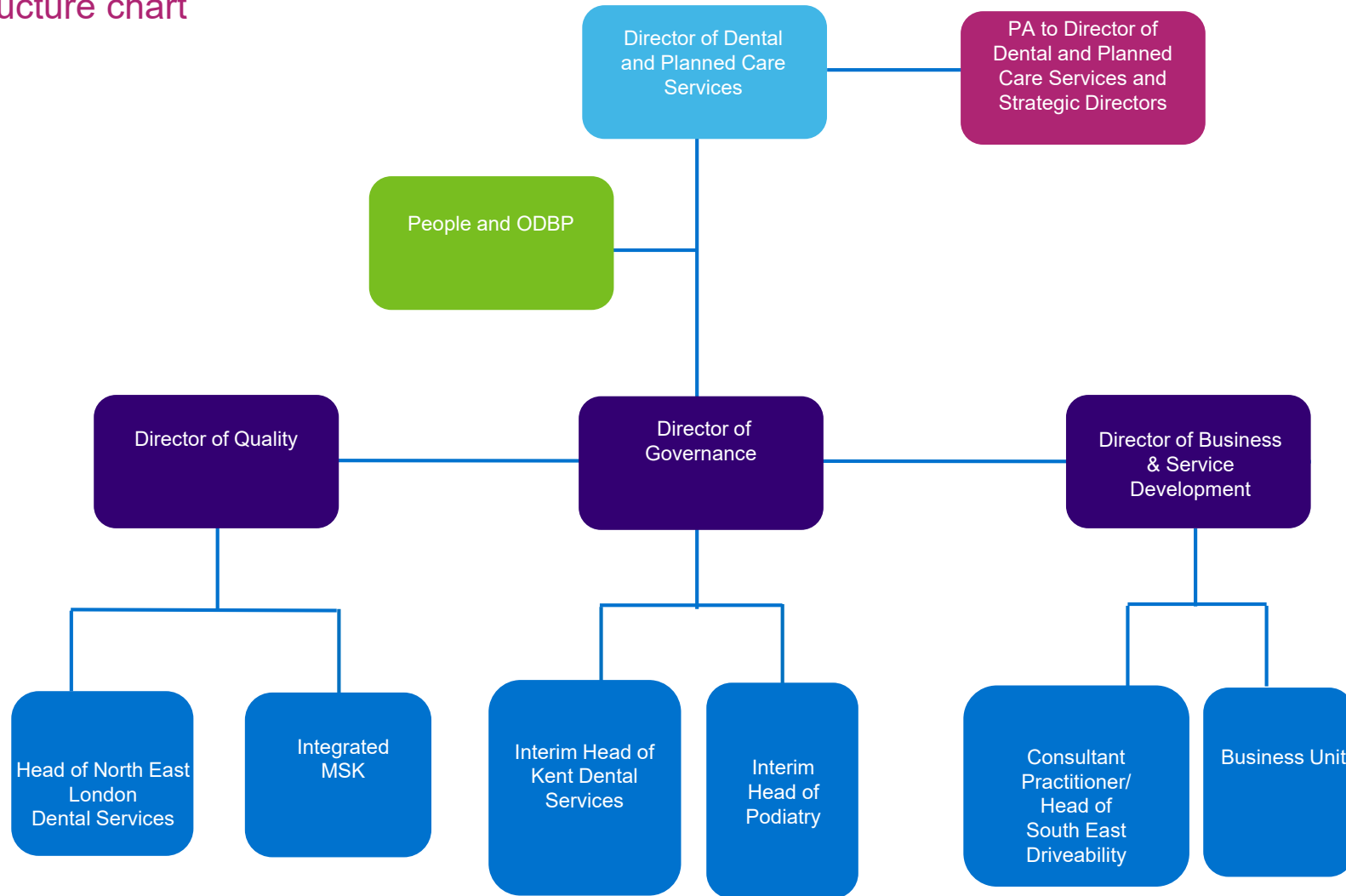
Adult Services

structure chart



Dental and Planned Care

structure chart



Specialist and Public Health

structure chart

