



Steps towards Jobs & Education



Education

“Who can help me with my education”



Voluntary Work

“Where do I go to get the right skills before starting work”

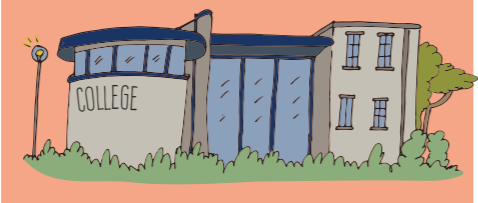


Paid Work

“Who could I speak to about finding a job”

kta
kent training and apprenticeships

e: KT&A@kent.gov.uk
w: kenttrainingandapprenticeships.co.uk



THE EDUCATION PEOPLE

e: hello@theeducationpeople.org



Do it

w: doit.foundation

BLACKTHORN TRUST

Blackthorn Trust
e: info@blackthorn.org.uk
w: blackthorn.org.uk

gotrain

e: info@go-train.co.uk
w: go-train.co.uk

ShawTrust

Contact via Job Centre Plus

RBLI

Improving lives every day
e: enquiries@rbli.co.uk



What can I do next?

I'd like help with finding a job...?



GROUNDWORK
CHANGING PLACES
CHANGING LIVES

w: groundwork.org.uk/Sites/south/Pages/kent-medway-south

Kudos

e: enquiry@cascaid.co.uk
w: kudos.cascaid.co.uk



SCOPE

Equality for disabled people

e: supporttowork@scope.org.uk
w: scope.org.uk/employment-services/support-to-work

Learning through voluntary work may lead to a qualification

CXK
inspiring people to thrive

e: info@cxk.org
w: cxk.org

Kent County Council
kent.gov.uk

In house LD team
e: kentpathwayservice@kent.gov.uk

COT
Canterbury Oast Trust
Supporting adults with learning disability

e: info@c-o-t.org.uk
w: c-o-t.org.uk

Department for Work & Pensions

Work & Health programme via Job Centre Plus or Work Coach

PEOPLE

w: Kentsupportedemployment@Theeducationpeople.org

first step trust

e: Katie.ryan@firststeptrust.org.uk

National Careers Service
Helping you take the next step

w: nationalcareers.service.gov.uk/get-a-job

mencap
The voice of learning disability

e: HRSS@mencap.org.uk
w: mencap.org.uk

North West Kent Countryside Partnership

North West Kent Countryside Partnership
w: nwkcp.org/contact

cgl
change, grow, live

w: changegrowlive.org/contact-us/jobs